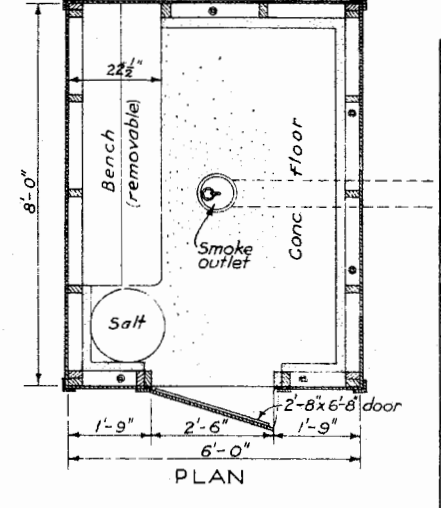


CROSS SECTION
Scale 1/2" = 1'-0"

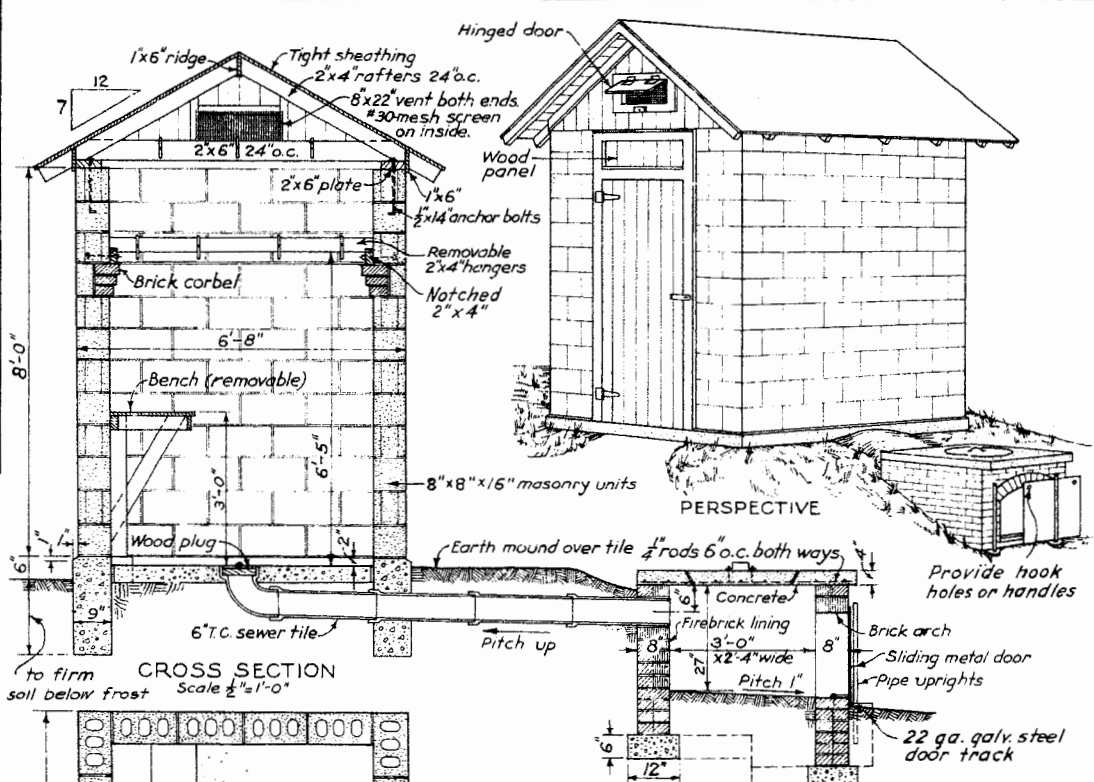
- ### BILL OF MATERIALS SMOKEHOUSE
- CONCRETE 1:3:5 mix
10 bags cement, 1 cu. yd. sand, 1 1/2 cu. yds. gravel.
- LUMBER
3 pieces 2" x 6" x 6'-0" cross ties.
3 " 2" x 4" x 12'-0" header, bench and hangers.
12 " 2" x 4" x 10'-0" sills, studs, and rafters.
23 " 2" x 4" x 8'-0" " " plates, and hangers.
2 " 1" x 10" x 8'-0" bench and vent doors.
2 " 1" x 6" x 10'-0" ridge and trim.
2 " 1" x 6" x 7'-0" door battens.
6 " 1" x 4" x 10'-0" corner boards and trim.
6 " 1" x 4" x 8'-0" trim.
6 " 1" x 6" x 7'-0" T. & G. boards for door.
275 ft. B.M. 6" drop siding.
120 ft. B.M. roof sheathing.
Roofing or asphalt shingles to cover 100 sq. ft. roof area.
- MISCELLANEOUS
7- 1/2" x 12" anchor bolts, with nuts and washers.
1 pair 8" Tee hinges, 1 safety hasp.
2-pair 2" x 2" hinges, for vent doors.
1-piece metal flashing - 6" x 40"
4 lin. ft. #30-mesh wire screen - 10" wide.
4 lengths 6" T.C. sewer pipe, 1- 6" 90° T.C. elbow.
Nails, hanging hooks, and paint not included.

- ### FIREBOX
- CONCRETE 1:2:3 mix.
6 bags cement, 1/2 cu. yd. sand, 1/3 cu. yd. broken hard brick, gravel or stone, (brick more heat resistant)
- MISCELLANEOUS
10 lin. ft. 6" x 6" No. 9 wire fabric 30" wide
6 pieces 1/2" steel rods 42" long.
10 " 1/2" " 32" "
2 " 1/4" pipe 36" long.
1-piece 24" x 32" metal, sliding door.

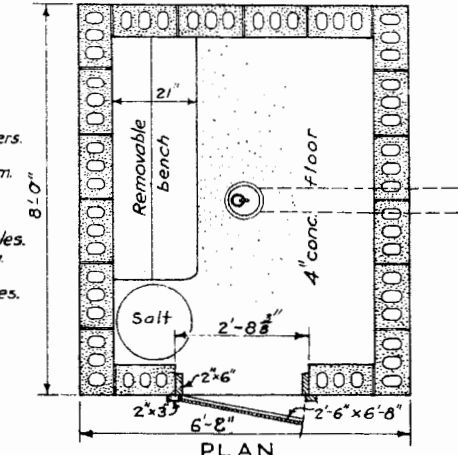


BILL OF MATERIALS
SMOKEHOUSE

- CONCRETE AND MORTAR.
Concrete 1:3:5 mix. Mortar 1:3 + 10% lime.
14 bags cement, 1/2 cu. yds. sand, 2 cu. yds. gravel
65 lbs hydrated lime.
- 142 8" x 8" x 16" smooth face masonry units.
12 8" x 4" x 16" " " " " " "
2 8" x 4" x 8" " " " " " "
14 8" x 8" x 8" " " half " " "
52 8" x 8" x 16" " " corner " "
12 8" x 8" x 16" " " jamb " "
12 8" x 8" x 8" " " half " "
- 100 common brick
- LUMBER
4 pieces 2" x 6" x 8'-0" plates and door jambs.
6 " 2" x 6" x 7'-0" " " cross ties.
6 " 2" x 4" x 10'-0" rafters, gable-end studs.
7 " 2" x 4" x 6'-0" bench and removable hangers.
3 " 2" x 3" x 8'-0" door casing.
3 " 1" x 6" x 10'-0" " battens, ridge, trim.
9 " 1" x 4" x 10'-0" trim.
1 " 1" x 12" x 6'-0" bench.
1 " 1" x 10" x 10'-0" " and vent doors.
- 120 ft. B.M. roof sheathing. 56 ft. B.M. 1 1/2" T & G. door, gables.
Roofing or asphalt shingles to cover 100 sq. ft. roof area.
- MISCELLANEOUS
8- 1/2" x 14" anchor bolts. 1 pr. 8" Tee hinges. 1 pr. 2" x 2" hinges.
6" x 38" metal flashing. 4 lin. ft. #30-mesh screen 10" wide.
Nails, hanging hooks, and paint not included.
- ### FIREBOX
- 7 bags cement, 1/2 cu. yd. sand, 1/3 cu. yd. gravel
450 common brick, 90 firebrick.
9- 1/2" steel rods 40" long. 6- 1/2" steel rods 48" long.
2 pieces 1/4" pipe 36" long.
1 metal sliding door 24" x 32".



CROSS SECTION
Scale 1/2" = 1'-0"



PLAN

**LSU
AgCenter**
Research & Extension

SMOKE HOUSE

USDA	'65	EX. 5695	SHEET 1 OF 1
------	-----	----------	--------------

A

B